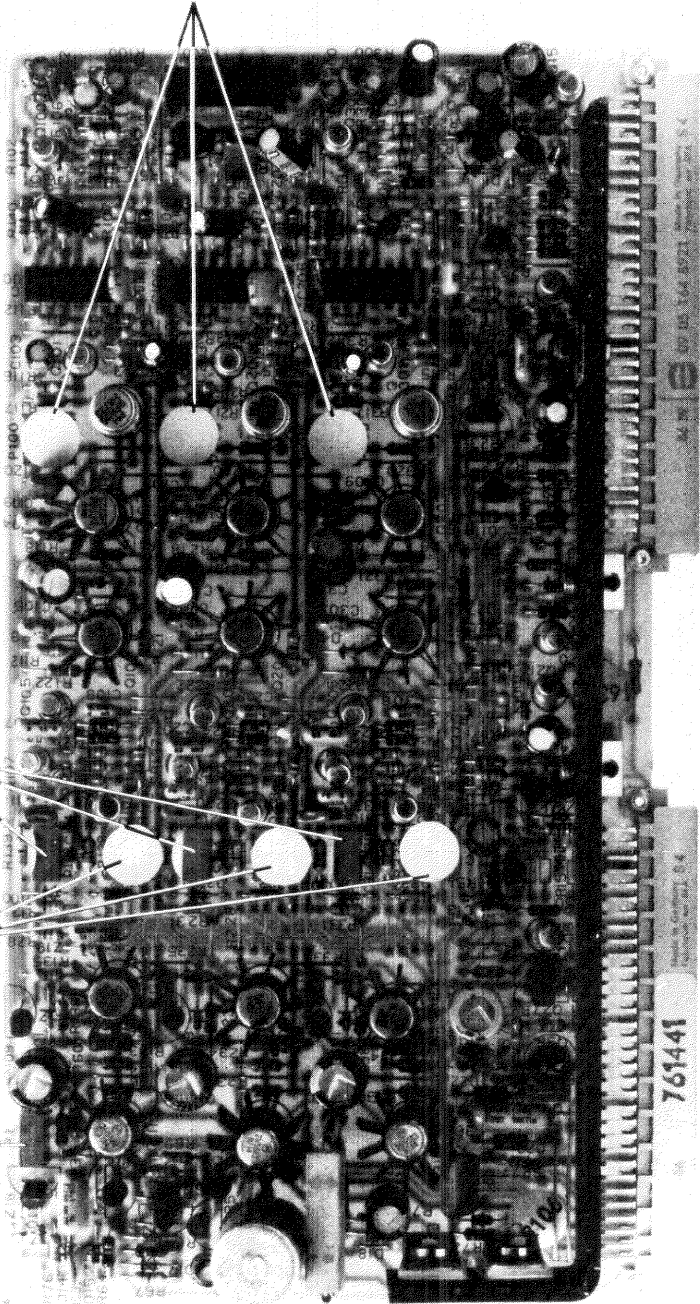


GAIN PRE AMP (FACTORY PREADJUSTED !)

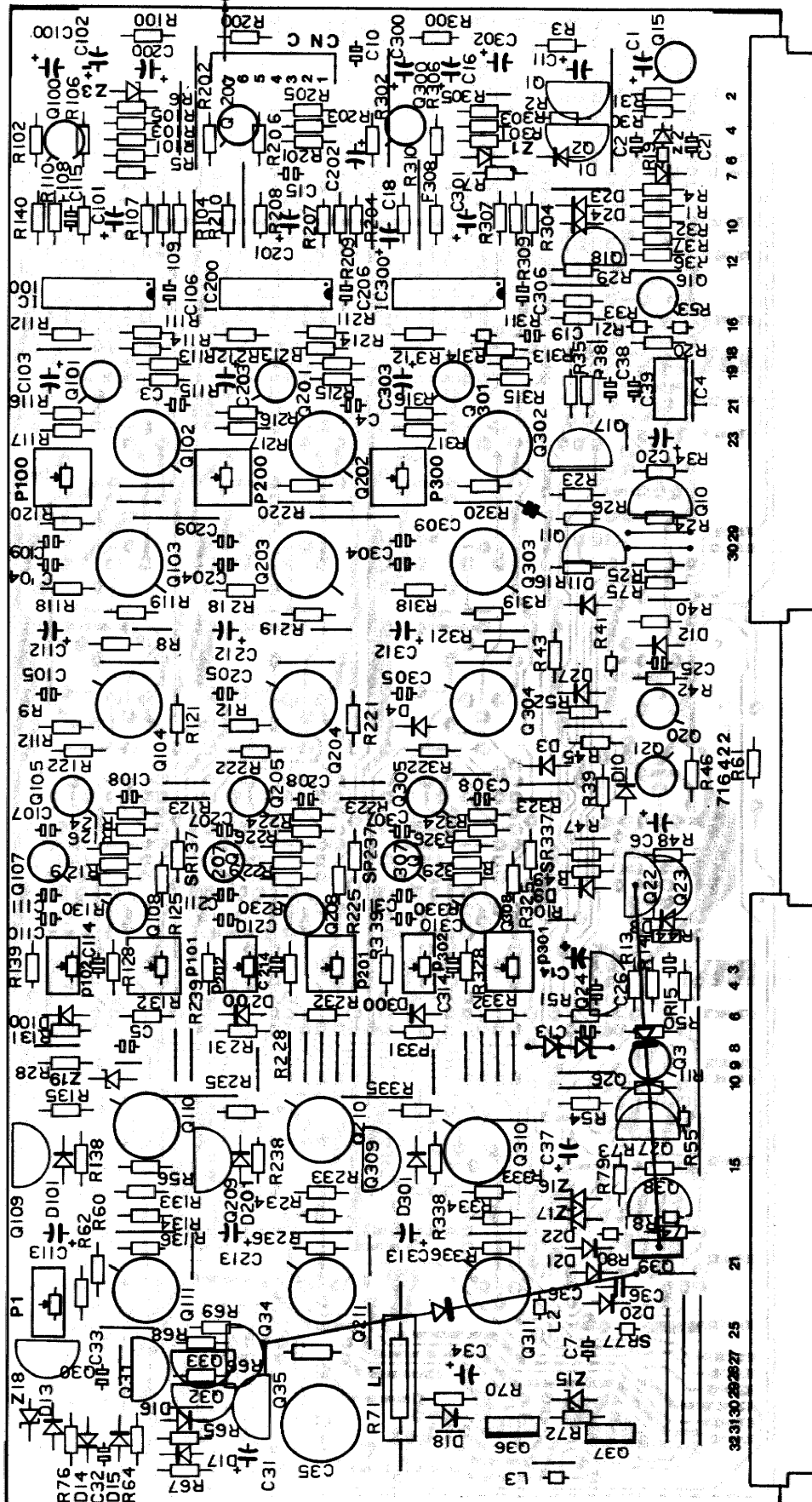
GAIN OUTPUT
(FACTORY PREADJUSTED !)
CURRENT SOURCE

ADJUSTMENT END OF BLANKING —



Connector Video Inputs

C To Input VIDEO & CONVERGENCE GENERATOR 761470 **C**



B → **I**
To FRAME
761395

A → **H**
To FRAME
761395

Name RGB 100 MHz		Article nr. 761441
Date 17/12/87	Drawn LDW	Checked LDW
BARCO Electronic Noodlaan 5 8720 Kuxne, Belgium		

MODIFICATIONS RESERVED

DC-MEASUREMENTS

- Employed meter : HANDYKIT MK-601
- For these measurements, no external signal was supplied to the projector, nor was the internal convergence signal used.
- Preparation : measure the DC-voltage on pin 10 (contrast) and 17 (brightness) of connector B and adjust the respective potentiometers on the CSB to obtain a voltage of 6 V.
- ALL MEASURED VALUES ARE EXPRESSED IN VOLT (DC)

GLEICHSPANNUNGEN

- Verwandtes Messgerät : HANDYKIT MK-601
- Für diese Messungen wurde weder das innere Konvergenzsignal gewählt, noch wurde ein externes Signal angeschlossen.
- Vorbereitung : messen Sie die Gleichspannung auf den Anschlüssen 10 (Kontrast) und 16 (Helligkeit) von Koppler B und regeln Sie die jeweiligen Potentiometer auf dem CSB für eine Spannung von 6 V.
- ALLE MESSWERTE SIND AUSGEDRÜCKT IN VOLT (DC).

pin	IC100	IC200	IC300
1	15.9	16.0	15.5
2	5.2	5.2	5.2
3	4.5	4.5	4.5
4	5.3	5.3	5.3
5	14.1	13.7	13.9
6	2.5	2.5	2.5
7	1.7	1.8	1.7
8	4.5	4.5	4.5
9	15.9	16.0	16.0
10	15.2	15.2	15.3
11	17.0	17.1	17.1
12	-1.4	-	-
13	0.0	0.0	0.0
14	-	-	-

	Q1	Q2	Q3	Q10	Q11	Q15**	Q16**
c	0.0	4.2	6.1	15.6	17.9	1.3	0.3
b	4.2	0.0	15.1	6.2	15.6	0.0	0.7
e	5.0	-0.2	14.9	5.5	14.9	0.0	0.0

	Q17**	Q18**	Q20	Q21	Q22	Q23	Q24
c	18.3	0.0	7.0	0.3	18.3	0.0	18.2
b	0.3	0.7	-0.1	0.7	0.3	0.3	6.9
e	1.5	0.0	0.0	0.0	0.6	0.5	6.4

	Q26	Q27	Q30	Q31	Q35	Q34	Q38	Q39	Q100	Q101	Q102	Q103	Q104
c	17.4	17.4	0.0	18.0	18.0	0.0	13.9	18.0	17.1	4.0	10.9	16.9	
b	0.0	0.0	125.7*	0.9	1.3	0.7	0.0	3.1	2.9	2.2	4.8	10.9	
e	0.0	0.0	126.9	1.1	1.8	0.0	0.0	2.5	2.2	1.4	4.0	10.1	

* : This value depends on the position of P1

* : Dieser Wert hängt ab von der Position von P1

	Q105	Q107	Q108	Q109	Q110	Q111	Q200	Q201	Q202	Q203	Q204
c	1.2	10.9	-3.9	0.0	17.4	0.2	18.0	17.2	3.9	10.4	17.1
b	-1.1	1.1	-10.4	0.6	1.4	17.4	3.2	2.9	2.3	4.8	10.3
									1.4	3.9	9.5

	Q205	Q207	Q208	Q209	Q210	Q211	Q300	Q301	Q302	Q303	Q304
c	1.2	11.2	-3.8	0.0	17.4	0.1	18.0	17.2	3.9	10.2	17.1
b	-1.1	1.1	-10.4	0.6	1.4	17.5	3.1	3.0	2.3	4.7	10.2
e	1.0	0.6	-11.0	1.4	0.6	18.1	2.5	2.4	1.5	3.9	9.4

	Q305	Q307	Q308	Q309	Q310	Q311
c	1.2	11.0	-3.9	0.0	17.4	0.1
b	-1.1	1.1	-10.4	0.6	1.4	17.4
e	1.0	0.6	-11.0	1.4	0.6	18.0

	Q32	Q33	Q36	Q37
s	0.0	0.0	0.0	213.0
d	16.7	1.3	214.0	229.0
g	1.1	16.7	0.7	213.0

** Remark : For the measurement of Q15, 16, 17 and 18, the input selection switch on the CSB has to be put in the position RGsB.

** Bemerkung : Für die Messungen von Q15, 16, 17 und 18 muß der Schalter für den Wahl des Eingangssignals auf dem CSB in der Position RGsB stehen.

- Necessary equipment:
 - oscilloscope
 - external video source, producing a video signal of at least 0.7Vpp

- Before starting the adjustments, the RGB drive board has to be fed for a few minutes to avoid any changes of adjustments during warm-up time

- Terminate the outputs A27, A29 and A31 on 75 ohm

- Execute these adjustments in the sequence as described below

1. Adjustment of P101, P201, P301

- connect the collector of Q16 to ground
- turn the brightness control on the CSB to minimum
- do not connect any video signal
- connect an oscilloscope successively to the outputs R (A31), G (A29) and B (A27)
- adjust P101, P201 and P301 successively so that the level of the signal at the respective outputs is raised 2 V above the black level

- Benötigtes Material :
 - Oszilloskop
 - auswendige Videoquelle mit einem Videosignal von mindestens 0.7 Vss

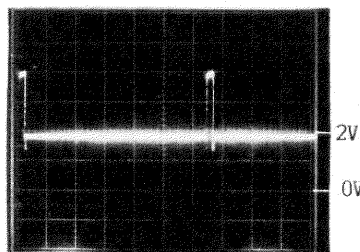
- Vor dem Anfang der Einstellungen muß der RGB Drive Baustein während einiger Minuten unter Spannung stehen um Änderungen von Einstellungen während des Anheizens zu verhüten.

- Schließen Sie die Ausgänge A27, A29 und A31 ab mit 75 Ohm.

- Führen Sie die Einstellungen aus wie im Folgenden beschrieben wird.

1. Einstellung von P101, P201, P301

- schließen Sie den Kollektor von Q16 kurz nach Masse
- drehen Sie die Helligkeit auf dem CSB auf Minimum
- schließen Sie kein Videosignal an
- verbinden Sie ein Oszilloskop nacheinander mit den Ausgängen R (A31), G (A29) und B (A27)
- stellen Sie nacheinander P101, P201 und P301 ein um auf den respektiven Ausgängen ein Signal zu bekommen, das sich 2V über dem Schwarzpegel befindet



- remove the connection between the collector of Q16 and ground

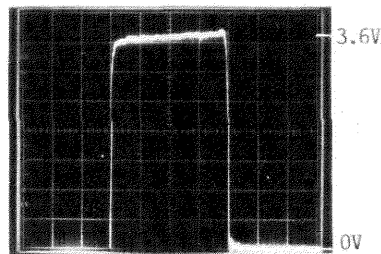
- entfernen Sie den Kurzschluß von dem Kollektor von Q16 nach Masse

2. Adjustment of P102, 202 and 302

- do not connect any video signal
- turn the brightness control on the CSB to minimum
- connect an oscilloscope successively to the outputs R (A31), G (A29) and B (A27)
- adjust P102, P202 and P302 successively so that the amplitude of the light pulse at the respective outputs is 3.6 V

2. Einstellung von P102, 202 und 302

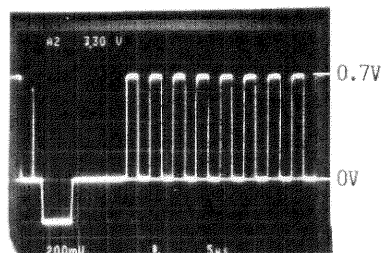
- schließen Sie kein Videosignal an
- drehen Sie die Helligkeit auf dem CSB auf Minimum
- verbinden Sie ein Oszilloskop nacheinander mit den Ausgängen R (A31), G (A29) und B (A27)
- stellen Sie nacheinander P102, P202 und P302 ein um auf den respektiven Ausgängen einen Lichtimpuls mit einer Amplitude von 3.6 V zu bekommen

3. Adjustment of P100, 200 and 300

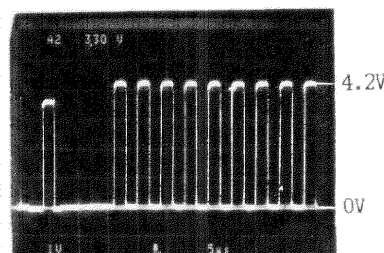
- turn the contrast control on the CSB to maximum
- turn the brightness control on the CSB to minimum
- connect a video signal of 0.72 V
- adjust P100, P200 and P300 successively so that the amplitude of the signal at the respective outputs is 4.2 V

3. Einstellung von P100, 200 und 300

- drehen Sie den Kontrast auf dem CSB auf Maximum
- drehen Sie die Helligkeit auf dem CSB auf Minimum
- schließen Sie ein Videosignal an von 0.72 V
- verbinden Sie ein Oszilloskop nacheinander mit den Ausgängen R (A31), G (A29) und B (A27)
- stellen Sie nacheinander P100, P200 und P300 ein um auf den respektiven Ausgängen ein Signal mit einer Amplitude von 4.2 V zu bekommen



Input videosignal



4. Adjustment of P1

- connect an external video signal to the projector or select the reproduction of the internal convergence signal
- adjust P1 so that the projected image doesn't show white edges

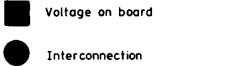
4. Einstellung von P1

- schließen Sie ein auswendiges Videosignal an an den Projektor oder wählen Sie das innere Konvergenzsignal
- stellen Sie P1 so ein, daß das projizierte Bild keine weißen Ränder zeigt



ITEM NO.	SIT.	DESCRIPTION	ITEM NO.	SIT.	DESCRIPTION
11 1477	C..1	CAPACITOR ELPR 100M Z5 25	11 2774	C310	CAPACITOR CE MI 100K U5 63
11 1476	C..2	CAPACITOR ELPR 47M Z5 25	11 3724	C311	CAPACITOR POME 100K K5 63
11 2774	C..3	CAPACITOR CE MI 100K U5 63	11 1477	C312	CAPACITOR ELPR 100M Z5 25
11 2774	C..4	CAPACITOR CE MI 100K U5 63	11 2237	C314	CAPACITOR NPO MI 39P G5 63
11 4132	C..5	CAPACITOR POMEFF 100K K 250	11 2774	C315	CAPACITOR CE MI 100K U5 63
11 1476	C..6	CAPACITOR ELPR 47M Z5 25			
11 4132	C..7	CAPACITOR POMEFF 100K K 250	13 1621	D..1	DIODE 1N4148 SWITCH
11 2774	C.10	CAPACITOR CE MI 100K U5 63	13 1621	D..2	DIODE 1N4148 SWITCH
11 1476	C.11	CAPACITOR ELPR 47M Z5 25	13 1621	D..3	DIODE 1N4148 SWITCH
11 3720	C.13	CAPACITOR POME 47K K5 63	13 1636	D..4	DIODE BAT43 SD101 SCHOTTKY
11 1476	C.14	CAPACITOR ELPR 47M Z5 25	13 1621	D..8	DIODE 1N4148 SWITCH
11 2774	C.15	CAPACITOR CE MI 100K U5 63	13 1621	D..9	DIODE 1N4148 SWITCH
11 1510	C.16	CAPACITOR ELPRMI 22M M5 25	13 1621	D.10	DIODE 1N4148 SWITCH
11 11575	C.18	CAPACITOR ELAX 22M Z 25	13 1621	D.11	DIODE 1N4148 SWITCH
11 2774	C.19	CAPACITOR CE MI 100K U5 63	13 1621	D.12	DIODE 1N4148 SWITCH
11 1476	C.20	CAPACITOR ELPR 47M Z5 25	13 1627	D.13	DIODE BAV21 SWITCH
11 59201	C.21	CAPACITOR PP RA 1K5 J5 100	13 1621	D.14	DIODE 1N4148 SWITCH
11 2366	C.25	CAPACITOR N750MI 220P J5 63	13 1621	D.15	DIODE 1N4148 SWITCH
11 2242	C.26	CAPACITOR NPO MI 100P J5 63	13 1621	D.16	DIODE 1N4148 SWITCH
11 1510	C.31	CAPACITOR ELPRMI 22M M5 25	13 1621	D.17	DIODE 1N4148 SWITCH
11 2692	C.32	CAPACITOR N750MI 120P J5 500	13 1621	D.18	DIODE 1N4148 SWITCH
11 4132	C.33	CAPACITOR POMEFF 100K K 250	13 1637	D.20	DIODE BA158 SWITCH
11 1477	C.34	CAPACITOR ELPR 100M Z5 25	13 1637	D.21	DIODE BA158 SWITCH
11 1639	C.35	CAPACITOR ELRA 47M T 250	13 1637	D.22	DIODE BA158 SWITCH
11 4136	C.36	CAPACITOR POMEFF 220K K 250	13 1621	D.23	DIODE 1N4148 SWITCH
11 1571	C.37	CAPACITOR ELPR 2M2 M5 350	13 1621	D.24	DIODE 1N4148 SWITCH
11 2774	C.38	CAPACITOR CE MI 100K U5 63	13 1627	D.25	DIODE BAV21 SWITCH
11 3730	C.39	CAPACITOR POME 330K K5 63	13 1627	D.26	DIODE BAV21 SWITCH
11 1510	C100	CAPACITOR ELPRMI 22M M5 25	13 1621	D.27	DIODE 1N4148 SWITCH
11 1548	C101	CAPACITOR ELPRMI 2M2 M5 50	13 1621	D100	DIODE 1N4148 SWITCH
11 1476	C102	CAPACITOR ELPR 47M Z5 25	13 1621	D101	DIODE 1N4148 SWITCH
11 1510	C103	CAPACITOR ELPRMI 22M M5 25	13 1621	D200	DIODE 1N4148 SWITCH
11 3724	C104	CAPACITOR POME 100K K5 63	13 1621	D201	DIODE 1N4148 SWITCH
11 3724	C105	CAPACITOR POME 100K K5 63	13 1621	D300	DIODE 1N4148 SWITCH
11 3724	C106	CAPACITOR POME 100K K5 63	13 1621	D301	DIODE 1N4148 SWITCH
11 3728	C107	CAPACITOR POME 220K K5 63	13 1729		DIODE ZENER 4V7 0W5 C
11 3722	C108	CAPACITOR POME 68K K5 63			
11 2774	C109	CAPACITOR CE MI 100K U5 63	13 4000	I..4	INTEGRATED CIRCUIT 7818
11 2774	C110	CAPACITOR CE MI 100K U5 63	13 2705	I100	INTEGRATED CIRCUIT 3246E
11 3724	C111	CAPACITOR POME 100K K5 63	13 2705	I200	INTEGRATED CIRCUIT 3246E
11 1477	C112	CAPACITOR ELPR 100M Z5 25	13 2705	I300	INTEGRATED CIRCUIT 3246E
11 1478	C113	CAPACITOR ELPR 220M Z5 25			
11 2237	C114	CAPACITOR NPO MI 39P G5 63	30 6159	L..1	CHOKE AX MS 2,2MH
11 2227	C115	CAPACITOR NPO MI 5P6 C5 63	77 3054	L..2	SPON 32,5 K1,6D0,25
11 1510	C200	CAPACITOR ELPRMI 22M M5 25	77 3054	L..3	SPON 32,5 K1,6D0,25
11 1548	C201	CAPACITOR ELPRMI 2M2 M5 50			
11 1476	C202	CAPACITOR ELPR 47M Z5 25	10 6834	P..1	TRIMPOT CEMV 200K K 0W50
11 1510	C203	CAPACITOR ELPRMI 22M M5 25	10 6723	P100	TRIMPOT CEMH 100E K 0W50
11 3724	C204	CAPACITOR POME 100K K5 63	10 6738	P101	TRIMPOT CEMH 2M K 0W50
11 3724	C205	CAPACITOR POME 100K K5 63	10 6824	P102	TRIMPOT CEMV 200E K 0W50
11 3724	C206	CAPACITOR POME 100K K5 63	10 6723	P200	TRIMPOT CEMH 100E K 0W50
11 3728	C207	CAPACITOR POME 220K K5 63	10 6738	P201	TRIMPOT CEMH 2M K 0W50
11 3722	C208	CAPACITOR POME 68K K5 63	10 6824	P202	TRIMPOT CEMV 200E K 0W50
11 2774	C209	CAPACITOR CE MI 100K U5 63	10 6723	P300	TRIMPOT CEMH 100E K 0W50
11 2774	C210	CAPACITOR CE MI 100K U5 63	10 6738	P301	TRIMPOT CEMH 2M K 0W50
11 3724	C211	CAPACITOR POME 100K K5 63	10 6824	P302	TRIMPOT CEMV 200E K 0W50
11 1477	C212	CAPACITOR ELPR 100M Z5 25			
11 1478	C213	CAPACITOR ELPR 220M Z5 25	71 6422	PC..	PC GRAPHICS RGB DRIVER 761441
11 2237	C214	CAPACITOR NPO MI 39P G5 63			
11 1510	C300	CAPACITOR ELPRMI 22M M5 25	13 14181	Q..1	TRANSISTOR BC559B,BC309B
11 1548	C301	CAPACITOR ELPRMI 2M2 M5 50	13 14295	Q..2	TRANSISTOR BC549B,
11 1476	C302	CAPACITOR ELPR 47M Z5 25	13 2520	Q..3	TRANSISTOR 2N2907
11 1510	C303	CAPACITOR ELPRMI 22M M5 25	13 14295	Q.10	TRANSISTOR BC549B,
11 3724	C304	CAPACITOR POME 100K K5 63	13 14295	Q.11	TRANSISTOR BC549B,
11 3724	C305	CAPACITOR POME 100K K5 63	13 1491	Q.15	TRANSISTOR BSX20,2N2369
11 3724	C306	CAPACITOR POME 100K K5 63	13 1491	Q.16	TRANSISTOR BSX20,2N2369
11 3728	C307	CAPACITOR POME 220K K5 63	13 14295	Q.17	TRANSISTOR BC549B,
11 3722	C308	CAPACITOR POME 68K K5 63	13 14295	Q.18	TRANSISTOR BC549B,
11 1478	C313	CAPACITOR ELPR 220M Z5 25	13 1491	Q.20	TRANSISTOR BSX20,2N2369
11 2774	C309	CAPACITOR CE MI 100K U5 63	13 1491	Q.21	TRANSISTOR BSX20,2N2369

ITEM NO.	SIT.	DESCRIPTION	ITEM NO.	SIT.	DESCRIPTION
13 14295	Q.22	TRANSISTOR BC549B,	10 1142	R.29	RESISTOR CF 3K3 J 0W25
13 14181	Q.23	TRANSISTOR BC559B,BC309B	10 1132	R.30	RESISTOR CF 470E J 0W25
13 14295	Q.24	TRANSISTOR BC549B,	10 1130	R.31	RESISTOR CF 330E J 0W25
13 14295	Q.26	TRANSISTOR BC549B,	10 1152	R.32	RESISTOR CF 22K J 0W25
13 1411	Q.27	TRANSISTOR BC549C,BC239C	10 1140	R.33	RESISTOR CF 2K2 J 0W25
13 2552	Q.30	TRANSISTOR BF423	10 1136	R.34	RESISTOR CF 1K J 0W25
13 1411	Q.31	TRANSISTOR BC549C,BC239C	10 1116	R.35	RESISTOR CF 22E J 0W25
13 2910	Q.32	TRANSISTOR BS170 FET	10 1136	R.36	RESISTOR CF 1K J 0W25
13 2910	Q.33	TRANSISTOR BS170 FET	10 1148	R.37	RESISTOR CF 10K J 0W25
13 14295	Q.34	TRANSISTOR BC549B,	10 1146	R.38	RESISTOR CF 6K8 J 0W25
13 14181	Q.35	TRANSISTOR BC559B,BC309B	10 1146	R.39	RESISTOR CF 6K8 J 0W25
13 2593	Q.36	TRANSISTOR BUZ74A FET	10 1254	R.40	RESISTOR CF 33K J 0W50
13 2593	Q.37	TRANSISTOR BUZ74A FET	10 1140	R.41	RESISTOR CF 2K2 J 0W25
13 14295	Q.38	TRANSISTOR BC549B,	10 1136	R.42	RESISTOR CF 1K J 0W25
13 1471	Q.39	TRANSISTOR BF458	10 1144	R.43	RESISTOR CF 4K7 J 0W25
13 1491	Q100	TRANSISTOR BSX20,2N2369	10 1112	R.44	RESISTOR CF 10E J 0W25
13 1491	Q101	TRANSISTOR BSX20,2N2369	10 1144	R.45	RESISTOR CF 4K7 J 0W25
13 2586	Q102	TRANSISTOR BFR95	10 1145	R.46	RESISTOR CF 5K6 J 0W25
13 2586	Q103	TRANSISTOR BFR95	10 1144	R.47	RESISTOR CF 4K7 J 0W25
13 2586	Q104	TRANSISTOR BFR95	10 1147	R.48	RESISTOR CF 8K2 J 0W25
13 1491	Q105	TRANSISTOR BSX20,2N2369	10 1116	R.49	RESISTOR CF 22E J 0W25
13 1491	Q107	TRANSISTOR BSX20,2N2369	10 1136	R.50	RESISTOR CF 1K J 0W25
13 1491	Q108	TRANSISTOR BSX20,2N2369	10 1116	R.51	RESISTOR CF 22E J 0W25
13 2507	Q109	TRANSISTOR BF324	10 1133	R.52	RESISTOR CF 560E J 0W25
13 2586	Q110	TRANSISTOR BFR95	10 1140	R.53	RESISTOR CF 2K2 J 0W25
13 2911	Q111	TRANSISTOR 2N5583	10 1143	R.54	RESISTOR CF 3K9 J 0W25
13 1491	Q200	TRANSISTOR BSX20,2N2369	10 1136	R.55	RESISTOR CF 1K J 0W25
13 1491	Q201	TRANSISTOR BSX20,2N2369	10 1139	R.56	RESISTOR CF 1K8 J 0W25
13 2586	Q202	TRANSISTOR BFR95	10 1116	R.60	RESISTOR CF 22E J 0W25
13 2586	Q203	TRANSISTOR BFR95	10 1250	R.61	RESISTOR CF 15K J 0W50
13 2586	Q204	TRANSISTOR BFR95	10 1164	R.62	RESISTOR CF 220K J 0W25
13 1491	Q205	TRANSISTOR BSX20,2N2369	10 1148	R.64	RESISTOR CF 10K J 0W25
13 1491	Q207	TRANSISTOR BSX20,2N2369	10 1136	R.65	RESISTOR CF 1K J 0W25
13 1491	Q208	TRANSISTOR BSX20,2N2369	10 1136	R.66	RESISTOR CF 1K J 0W25
13 2507	Q209	TRANSISTOR BF324	10 1132	R.67	RESISTOR CF 470E J 0W25
13 2586	Q210	TRANSISTOR BFR95	10 1140	R.68	RESISTOR CF 2K2 J 0W25
13 2911	Q211	TRANSISTOR 2N5583	10 1118	R.69	RESISTOR CF 33E J 0W25
13 1491	Q300	TRANSISTOR BSX20,2N2369	10 1141	R.70	RESISTOR CF 2K7 J 0W25
13 1491	Q301	TRANSISTOR BSX20,2N2369	10 3744	R.71	RESISTOR WW H 2K2 K 5W
13 2586	Q302	TRANSISTOR BFR95	10 1124	R.72	RESISTOR CF 100E J 0W25
13 2586	Q303	TRANSISTOR BFR95	10 1167	R.73	RESISTOR CF 390K J 0W25
13 2586	Q304	TRANSISTOR BFR95	10 11644	R.74	RESISTOR MF 220K J 0W25
13 1491	Q305	TRANSISTOR BSX20,2N2369	10 1142	R.75	RESISTOR CF 3K3 J 0W25
13 1491	Q307	TRANSISTOR BSX20,2N2369	10 1141	R.76	RESISTOR CF 2K7 J 0W25
13 1491	Q308	TRANSISTOR BSX20,2N2369	10 11129	R.77	RESISTOR CFFUL 10E J 0W25
13 2507	Q309	TRANSISTOR BF324	10 1143	R.79	RESISTOR CF 3K9 J 0W25
13 2586	Q310	TRANSISTOR BFR95	10 1136	R.80	RESISTOR CF 1K J 0W25
13 2911	Q311	TRANSISTOR 2N5583	10 1138	R.81	RESISTOR CF 1K5 J 0W25
10 1145	R..1	RESISTOR CF 5K6 J 0W25	10 1116	R.82	RESISTOR CF 22E J 0W25
10 1148	R..2	RESISTOR CF 10K J 0W25	10 11231	R100	RESISTOR CF 75E J 0W25
10 1151	R..3	RESISTOR CF 18K J 0W25	10 1140	R101	RESISTOR CF 2K2 J 0W25
10 1124	R..4	RESISTOR CF 100E J 0W25	10 1129	R102	RESISTOR CF 270E J 0W25
10 1140	R..5	RESISTOR CF 2K2 J 0W25	10 1116	R103	RESISTOR CF 22E J 0W25
10 1144	R..6	RESISTOR CF 4K7 J 0W25	10 1148	R104	RESISTOR CF 10K J 0W25
10 1136	R..7	RESISTOR CF 1K J 0W25	10 1120	R105	RESISTOR CF 47E J 0W25
10 1140	R..8	RESISTOR CF 2K2 J 0W25	10 1120	R106	RESISTOR CF 47E J 0W25
10 1137	R..9	RESISTOR CF 1K2 J 0W25	10 1131	R107	RESISTOR CF 390E J 0W25
10 1140	R.11	RESISTOR CF 2K2 J 0W25	10 1131	R108	RESISTOR CF 390E J 0W25
10 1140	R.12	RESISTOR CF 2K2 J 0W25	10 1135	R109	RESISTOR CF 820E J 0W25
10 1116	R.16	RESISTOR CF 22E J 0W25	10 1126	R110	RESISTOR CF 150E J 0W25
10 1135	R.19	RESISTOR CF 820E J 0W25	10 1116	R111	RESISTOR CF 22E J 0W25
10 1150	R.20	RESISTOR CF 15K J 0W25	10 1139	R112	RESISTOR CF 1K8 J 0W25
10 1154	R.21	RESISTOR CF 33K J 0W25	10 1151	R113	RESISTOR CF 18K J 0W25
10 1151	R.22	RESISTOR CF 18K J 0W25	10 1143	R114	RESISTOR CF 3K9 J 0W25
10 1135	R.23	RESISTOR CF 820E J 0W25	10 1116	R115	RESISTOR CF 22E J 0W25
10 1134	R.24	RESISTOR CF 680E J 0W25	10 1131	R116	RESISTOR CF 390E J 0W25
10 1136	R.25	RESISTOR CF 1K J 0W25	10 1121	R117	RESISTOR CF 56E J 0W25
10 1141	R.26	RESISTOR CF 2K7 J 0W25	10 1127	R118	RESISTOR CF 180E J 0W25
10 1140	R.28	RESISTOR CF 2K2 J 0W25	10 1228	R119	RESISTOR CF 220E J 0W50
			10 1118	R120	RESISTOR CF 33E J 0W25

ITEM NO.	SIT.	DESCRIPTION	ITEM NO.	SIT.	DESCRIPTION
10 1112	R121	RESISTOR CF 10E J OW25	10 1116	R311	RESISTOR CF 22E J OW25
10 1231	R122	RESISTOR CF 390E J OW50	10 1139	R312	RESISTOR CF 1K8 J OW25
10 1144	R123	RESISTOR CF 4K7 J OW25	10 1151	R313	RESISTOR CF 18K J OW25
10 1124	R124	RESISTOR CF 100E J OW25	10 1143	R314	RESISTOR CF 3K9 J OW25
10 1167	R125	RESISTOR CF 390K J OW25	10 1116	R315	RESISTOR CF 22E J OW25
10 1129	R126	RESISTOR CF 270E J OW25	10 1131	R316	RESISTOR CF 390E J OW25
10 1132	R128	RESISTOR CF 470E J OW25	10 1121	R317	RESISTOR CF 56E J OW25
10 1128	R129	RESISTOR CF 220E J OW25	10 1127	R318	RESISTOR CF 180E J OW25
10 1130	R130	RESISTOR CF 330E J OW25	10 1228	R319	RESISTOR CF 220E J OW50
10 1133	R131	RESISTOR CF 560E J OW25	10 1118	R320	RESISTOR CF 33E J OW25
10 1153	R132	RESISTOR CF 27K J OW25	10 1112	R321	RESISTOR CF 10E J OW25
10 1236	R133	RESISTOR CF 1K J OW50	10 1231	R322	RESISTOR CF 390E J OW50
10 1122	R134	RESISTOR CF 68E J OW25	10 1144	R323	RESISTOR CF 4K7 J OW25
10 1121	R135	RESISTOR CF 56E J OW25	10 1124	R324	RESISTOR CF 100E J OW25
10 11231	R136	RESISTOR CF 75E J OW25	10 1167	R325	RESISTOR CF 390K J OW25
10 11129	R137	RESISTOR CFFUL 10E J OW25	10 1129	R326	RESISTOR CF 270E J OW25
10 1117	R138	RESISTOR CF 27E J OW25	10 1132	R328	RESISTOR CF 470E J OW25
10 1118	R139	RESISTOR CF 33E J OW25	10 1128	R329	RESISTOR CF 220E J OW25
10 1129	R140	RESISTOR CF 270E J OW25	10 1130	R330	RESISTOR CF 330E J OW25
10 11231	R200	RESISTOR CF 75E J OW25	10 1133	R331	RESISTOR CF 560E J OW25
10 1140	R201	RESISTOR CF 2K2 J OW25	10 1153	R332	RESISTOR CF 27K J OW25
10 1129	R202	RESISTOR CF 270E J OW25	10 1236	R333	RESISTOR CF 1K J OW50
10 1116	R203	RESISTOR CF 22E J OW25	10 1122	R334	RESISTOR CF 68E J OW25
10 1148	R204	RESISTOR CF 10K J OW25	10 1121	R335	RESISTOR CF 56E J OW25
10 1120	R205	RESISTOR CF 47E J OW25	10 11231	R336	RESISTOR CF 75E J OW25
10 1120	R206	RESISTOR CF 47E J OW25	10 11129	R337	RESISTOR CFFUL 10E J OW25
10 1131	R207	RESISTOR CF 390E J OW25	10 1117	R338	RESISTOR CF 27E J OW25
10 1131	R208	RESISTOR CF 390E J OW25	10 1118	R339	RESISTOR CF 33E J OW25
10 1135	R209	RESISTOR CF 820E J OW25			
10 1126	R210	RESISTOR CF 150E J OW25	13 1754	Z..1	DIODE ZENER 3V3 OW5 C
10 1116	R211	RESISTOR CF 22E J OW25	13 1716	Z..2	DIODE ZENER 5V1 OW5 C
10 1139	R212	RESISTOR CF 1K8 J OW25	13 1716	Z..3	DIODE ZENER 5V1 OW5 C
10 1151	R213	RESISTOR CF 18K J OW25	13 1729	Z..10	DIODE ZENER 4V7 OW5 C
10 1143	R214	RESISTOR CF 3K9 J OW25	13 1716	Z..11	DIODE ZENER 5V1 OW5 C
10 1116	R215	RESISTOR CF 22E J OW25	13 1749	Z..15	DIODE ZENER 18V OW5 C
10 1131	R216	RESISTOR CF 390E J OW25	13 1771	Z..16	DIODE ZENER 150V OW5 C
10 1121	R217	RESISTOR CF 56E J OW25	13 1721	Z..17	DIODE ZENER 13V OW5 C
10 1127	R218	RESISTOR CF 180E J OW25	13 1721	Z..18	DIODE ZENER 13V OW5 C
10 1228	R219	RESISTOR CF 220E J OW50	13 1735	Z..19	DIODE ZENER 10V OW5 C
10 1118	R220	RESISTOR CF 33E J OW25			
10 1112	R221	RESISTOR CF 10E J OW25	31 3525	001.	CONNECTOR EURO MOBSE P64
10 1231	R222	RESISTOR CF 390E J OW50	36 7699	0011	RIVET CHOBERT D2,38 L6,35
10 1144	R223	RESISTOR CF 4K7 J OW25	31 3149	002.	CONNECTOR RIVET MOBTE D3 L25
10 1124	R224	RESISTOR CF 100E J OW25	31 3586	003.	CONNECTOR MT MOBTE P 7 2,5
10 1167	R225	RESISTOR CF 390K J OW25	80 1562	004.	HEATSINK GRAPHICS RGB DRI 100M
10 1129	R226	RESISTOR CF 270E J OW25	36 7600	0041	FIXING BLOC UNIVERSEL M3
10 1132	R228	RESISTOR CF 470E J OW25	36 7502	0042	WASHER DIN6798 A 3,2
10 1128	R229	RESISTOR CF 220E J OW25	71 23024	0043	WASHER DIA 3,25X 7 T1 BAK
10 1130	R230	RESISTOR CF 330E J OW25	36 20216	0044	SCREW DIN84 M 3 X 6 MP-
10 1133	R231	RESISTOR CF 560E J OW25	36 20226	005.	SCREW DIN84 M 3 X 8 MP-
10 1153	R232	RESISTOR CF 27K J OW25	36 7502	0051	WASHER DIN6798 A 3,2
10 1236	R233	RESISTOR CF 1K J OW50	36 61026	0052	NUT DIN934 M 3 HEXAGONAL
10 1122	R234	RESISTOR CF 68E J OW25	80 1520	006.	SPACER ISO L 6,5 D9,75D4,9 PSU
10 1121	R235	RESISTOR CF 56E J OW25	13 30292	0060	TRANSISTOR BUSH INSULAT TO-220
10 11231	R236	RESISTOR CF 75E J OW25	36 20167	0061	SCREW DIN84 M 2,5X16 MP-
10 11129	R237	RESISTOR CFFUL 10E J OW25	36 7502	0062	WASHER DIN6798 A 3,2
10 1117	R238	RESISTOR CF 27E J OW25	36 61106	0063	NUT DIN934 M 2,5 HEXAGONAL
10 1118	R239	RESISTOR CF 33E J OW25	80 0354	0064	WASHER DIA 3,25X 7,5 T , MS
10 11231	R300	RESISTOR CF 75E J OW25	13 3068	007.	TRANSISTOR AL OX. WAFER AOS220
10 1140	R301	RESISTOR CF 2K2 J OW25	13 30193	0071	TRANSISTOR BUSH INSULAT TO-126
10 1129	R302	RESISTOR CF 270E J OW25	36 20157	0072	SCREW DIN84 M 2,5X12 MP-
10 1116	R303	RESISTOR CF 22E J OW25	36 7502	0073	WASHER DIN6798 A 3,2
10 1148	R304	RESISTOR CF 10K J OW25	13 30191	0074	TRANSISTOR WASHER TO-126
10 1120	R305	RESISTOR CF 47E J OW25	36 61106	0074	NUT DIN934 M 2,5 HEXAGONAL
10 1120	R306	RESISTOR CF 47E J OW25	13 3015	008.	TRANSISTOR COOLER TO-5
10 1131	R307	RESISTOR CF 390E J OW25	13 3013	0081	TRANSISTOR MOUNTING PAD TO-5
10 1131	R308	RESISTOR CF 390E J OW25	30 2108	009.	CORE TUBE 1,3/3,5X3
10 1135	R309	RESISTOR CF 820E J OW25	34 7047	1000	SLEEVE SHRINK D6,4/3,2 BLA UL
10 1126	R310	RESISTOR CF 150E J OW25			



						CRT socket RED
	E10					CRT socket GREEN
	V10					CRT socket BLUE
	W10				B1	SM power supply
						Vertical deflection • sync
						Horizontal deflection • EHT
						Control switch box
		X3		X5		RGB 100MHz. output RED
				Y6 Y5		RGB 100MHz. output GREEN
		Y3		Z5 Z6		RGB 100MHz. output BLUE
		Z3				
					D3	
					D8	
					D2	
					B4	
	A25					
	B7					
					B28	

Name		Article nr.	
RGB 100MHz		761441	
Date	Drawn	Checked	
01/10/87	PG 	PD 	
BARCO Electronic		Heerleen, S 6720 Kornee - Belgium	